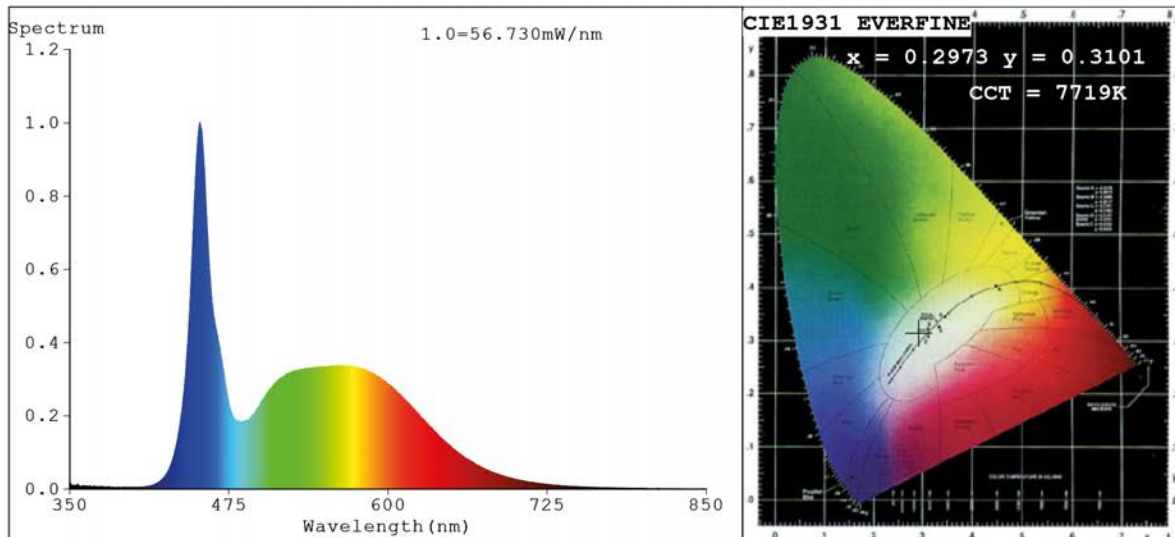


## Spectrum Test Report



### Color Parameters:

Chromaticity Coordinate:  $x=0.2973$   $y=0.3101$   $u'=0.1941$   $v'=0.4555$   
 CCT=7719K (Duv=0.0016) Dominant WL:Ld =482.9nm Purity=14.1%  
 Ratio:R=12.5% G=81.1% B=6.4%;;Peak WL:Lp=452.2nm FWHM=17.9nm  
 Render Index:Ra=83.2 CRI=75.6 TM30:Rf=79 Rg=93  
 R1 =82 R2 =89 R3 =90 R4 =82 R5 =82 R6 =82 R7 =88  
 R8 =71 R9 =8 R10=72 R11=81 R12=52 R13=85 R14=95 R15=78

### Photo Parameters:

Flux = 1240 lm Eff. : 117.44 lm/W Fe = 4.141 W

### Electrical parameters:

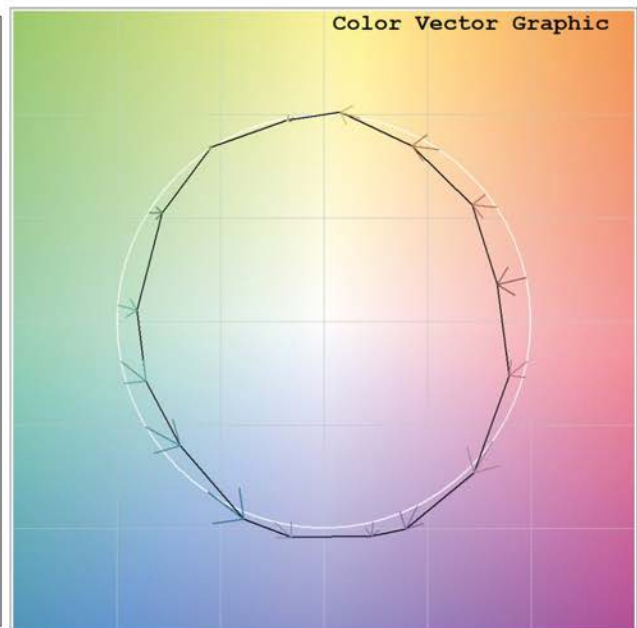
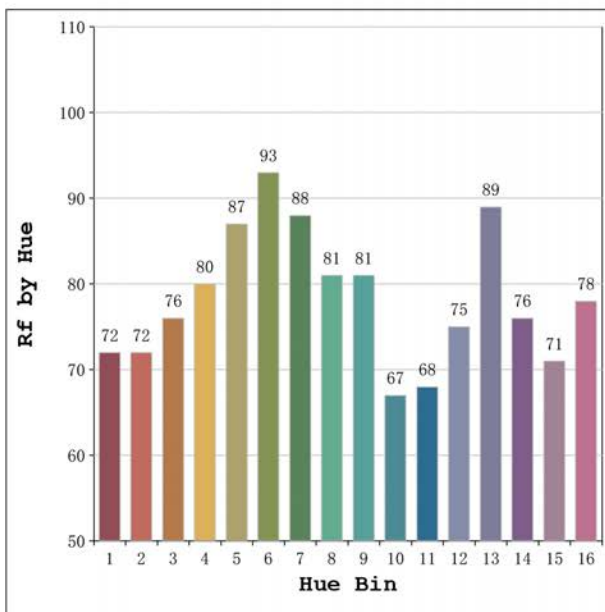
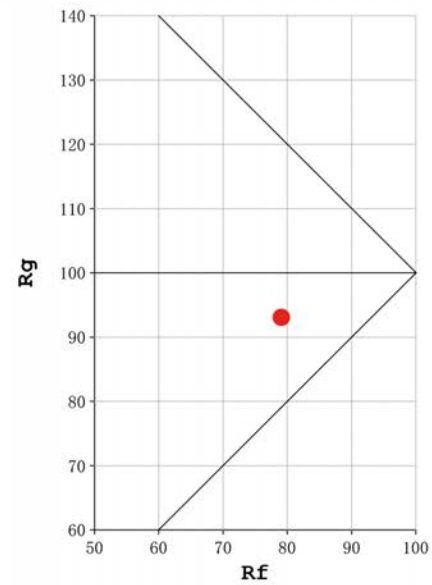
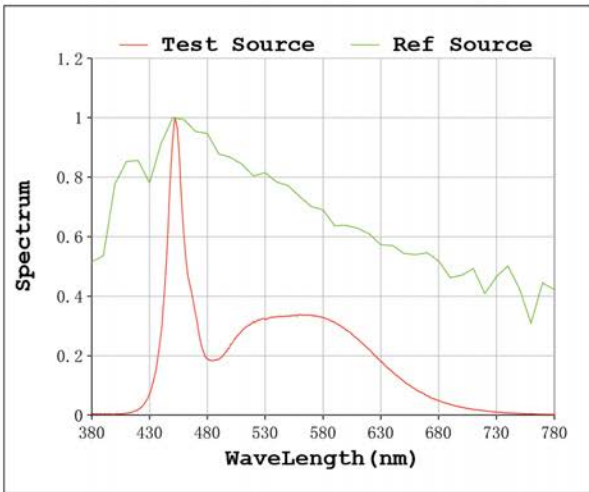
V = 23.998 V I = 0.4400 A P = 10.56 W PF = 1.000

Status: Integral T = 500 ms Ip = 36743 (56%)

Model:Ávila free cut 7500K  
 Tester:Sergio Carneros  
 Temperature:20Deg  
 Manufacturer:Luz Negra

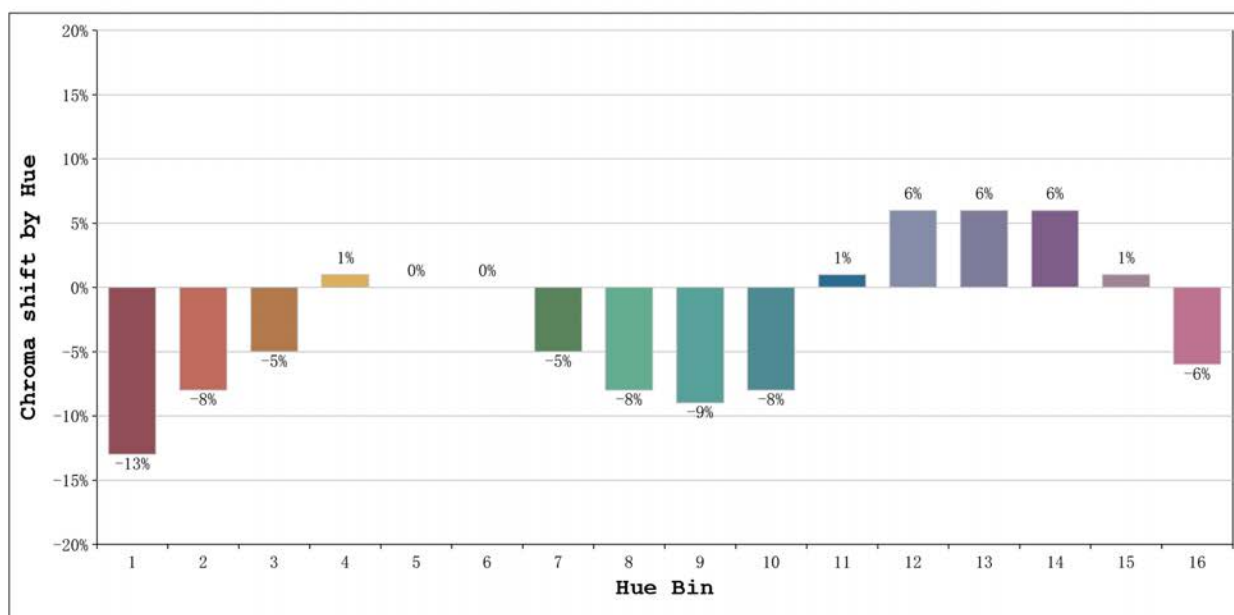
Number: 33.218  
 Date:2025-06-03 11:43:35  
 Humidity:50%  
 Remarks:100cm de tira flexible

**Rf: 79**      **CCT: 7719 K**      **u': 0.1941**  
**Rg: 93**      **Duv: 0.0016**      **v': 0.4555**



Model:Ávila free cut 7500K  
 Tester:Sergio Carneros  
 Temperature:20Deg  
 Manufacturer:Luz Negra

Number: 33.218  
 Date:2025-06-03 11:43:35  
 Humidity:50%  
 Remarks:100cm de tira flexible



			Graphic shift(%)	
Hue Bin	Hue Angle	Rf	Chroma	Hue
1	0.0° - 22.5°	72	-13	0
2	22.5° - 45.0°	72	-8	8
3	45.0° - 67.5°	76	-5	12
4	67.5° - 90.0°	80	1	10
5	90.0° - 112.5°	87	0	3
6	112.5° - 135.0°	93	0	-1
7	135.0° - 157.5°	88	-5	-2
8	157.5° - 180.0°	81	-8	1
9	180.0° - 202.5°	81	-9	12
10	202.5° - 225.0°	67	-8	17
11	225.0° - 247.5°	68	1	22
12	247.5° - 270.0°	75	6	10
13	270.0° - 292.5°	89	6	-1
14	292.5° - 315.0°	76	6	-10
15	315.0° - 337.5°	71	1	-16
16	337.5° - 360.0°	78	-6	-7

Model:Ávila free cut 7500K  
Tester:Sergio Carneros  
Temperature:20Deg  
Manufacturer:Luz Negra

Number: 33.218  
Date:2025-06-03 11:43:35  
Humidity:50%  
Remarks:100cm de tira flexible